

CIRQUE ENTRE NOUS

SHOW

« **ENTRE NOUS...** »

TECHNICAL SHEET

*Show for 5 artists
Length of the show: 50 minutes*

This technical sheet is an integral part of the contract. It must be initialled and signed in the same way as the rest of this contract. In case of difficulty to honour it, thank you for contacting our team, at least 1 month before the date of the show.

Contact : Héloïse Bourgeois
+33 (0)6 89 59 79 70
heloisebourgeois@gmail.com

Contents

Touring team and contacts	2
Logistic and welcoming	2
Travel	3
Dressing rooms and catering	3
Costumes	3
Welcoming team and needs	3
Planning	4
Decor and scenography	5
Stage	5
Anchor points for chinese pole	5
Sound system	6
Attachment	7
Examples of anchor points	7
Photos decor and scenography	7
Sacem and support	8
Chinese pole anchor plan	9

TOURING TEAM AND CONTACTS

You will welcome a team of 5 people, composed of:

5 Acrobats artists who also take care of the technical set up.

Artistic direction, tour manager, production, diffusion and technical direction:

Héloïse Bourgeois +33 (0)6 89 59 79 70 heloisebourgeois@gmail.com

Administration, signature of contracts and invoicing:

Les Thereses +33 (0)5 61 07 14 29 thereses@lesthereses.com

Contact : Héloïse Bourgeois
+33 (0)6 89 59 79 70
heloisebourgeois@gmail.com

LOGISTIC AND WELCOMING

TRAVEL

2 artists travel by car with a trailer carrying the equipment and the mats.

The other 3, travel by train or plane.

The organizer will ensure the transfer from the station or airport to the venue or the hotel.

DRESSING ROOMS AND CATERING

The organizer will give to the company a minimum of 1 clean dressing room for 5 persons with showers, sink and toilets.

Please provide the following: towels, mirrors and stands with hangers for costumes.

Cup cake, cheeses, sausages, bread, fresh seasonal fruits, dry fruits, sodas, juices, hot drinks.

COSTUMES

The organizer will provide the necessary equipment to clean the costumes (washing machine, dryer, ironing board and iron, stand with hangers).

WELCOMING TEAM

We need

1 Technical director

1 Stage manager

1 Sound technician for set up and balance, present during the show

It is important to have 3 people helping for the installation of the poles.

The details for the presence of the staff are specified in the planning.

If the organizer is not able to provide all the requested staff, please contact us.

Our needs:

- ICE AND PLASTIC BAGS NEARBY IN CASE OF INJURY
- Mop and bucket to wash the stage.
- Help to install our stakes if we use ours.
- A little table or a road case to put our computer on to send the music.
- 2 tarpaulins of 8m x 8m (or larger) in case of rain to protect our equipment during the set up.
- A space to park our trailer (loaded or empty) (dimension 2,24×1,45×0,87 metres) in a closed place or with security 24/24.



Contact : Héloïse Bourgeois

+33 (0)6 89 59 79 70

heloisebourgeois@gmail.com

PLANNING

When the company arrives, the sound patch must be wired and in working order.

The sound system calibrated.

The anchor points for the poles have to be installed before and ready to be used.

<p>Basic schedule / Planning type Day of the show – Set up / Representation / Break down</p>

	Schedule	Action	Technical director	Sound technician	Stage manager
1st service / set up repetition rehearsal	3H	Unloading of the truck / set up of chinese pole, and mats	1	1	1
		Sound balance / rehearsal	1	1	1
Break					
2nd Service / representation break down	2H	Warm up and representation	1	1	1
	1H30	Break down / loading of the truck	1	1	1
End of the day					

DECOR AND SCENOGRAPHY

The company will bring 3 chinese poles
The pole in the front is 6.25 meters and the two behind are 5.65 meters.

STAGE

This show can be in a 180-degree frontal or circular configuration if needed. It is still preferable not to have people sitting behind the stage.

The playground needs to be 9 meters by 9 meters with sufficient space around for the anchorage points.

The floor has to be smooth, flat and featureless.

The floor will be covered by mats of 8 meters by 8 meters brought by the company.

If we play on stage it is sometimes better to reinforce under the stage where the poles are placed.

IT IS IMPOSSIBLE TO PLAY WITH THE PRESENCE OF RAIN OR STRONG HUMIDITY. AND IT IS NECESSARY TO PLAY IN A SHADED AREA.

LIGHTING

The company doesn't have a light technician. Therefore, if the show is scheduled in the evening, please provide adequate lighting (full-light type) on the entire stage and a technician on site.

ANCHOR POINTS FOR CHINESE POLE

The manager of the company will contact the technical team to validate the anchor points.

The poles will have to be guyed by cables. We need 4 anchor points on the ground, each supporting 500kg (big stakes, counterweights, water containers, chemical or mechanical sealing wall anchor points) and 2 others supporting 1000kg. The manager of the company will study the placement of the points. (See the plan of the poles in attachment)

The company provides:

- 64 acrobatic puzzle mats to cover the ground on 8x8m
- 5 chairs
- 3 chinese poles including head and foot
- 8 cables
- 1 slings to connect the double pole
- 8 straps ratchet to put the tension on the poles
- quick links
- carabineers

If needed, the company can supply 6 big stakes for ground anchorage and a mass.
Stakes (3 centimeter diameter, 1 meter long, 10 kilos each)

SOUND SYSTEM

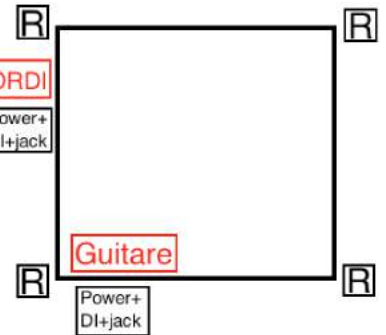
We don't have a stage manager or a sound technician on tour with us. Therefore, thank you for providing a sound technician (with all the necessary professional knowledge) to ensure the smooth running of the show.

ELECTRICITY

2 PC 16 with triplet (1 in front of the stage, the other at the computer level)

DIFFUSION ADDRESS SYSTEM

Diffusion system adapted for optimal sound
L-R with subwoofer type L-Acoustics, D&B, ...



FOH CONTROL BOOTH

We need a digital board type Yamaha 12 entry 01V96 or else with at least 12 inputs and 4 outputs monitor + LR. We send CUES with QLAB during the show. (Our songs are in wave format). The console (technical control) should preferably be placed stage right close to the backdrop in order to communicate as best as possible with the artists.

MONITORS (R-on the drawing)

The monitors are made from the FOH board. Thanks for providing 4 side fills on tripods type L-Acoustics MTD 112.

HF / MICROPHONES

4 wireless receivers (Shure ULXD4, UR4D, GLXD4) :

- 1 **beltpack** (Shure ULXD1, UR, GLXD1) with **JACK adaptators (6.35mm)**
- 1 **DPA 4088** with ear-mouting skin colored (mounted on the right) + 1 **beltpack** (QLXD1...)
- 2 **handheld wireless microphones** (ULXD2/SM58)



PATCH

CH	INSTR	MIC	COMMENTS
1	Vocal	Micro HF	Micro stand provided by us
2	Vocal	Micro HF	
3	Vocal	DPA 4088	BodyPack HF serre tête couleur chaire
4	GUITAR		BodyPack HF+ adapt jack (6,35mm)
5	GUITAR	DI (AR133 BSS)	
6	PC left	DI (AR133 BSS)	Thanks for providing the necessary mini-jack cable (stereo)
7	PC right	DI (AR133 BSS)	

If ever anything is not clear to you or if you are unable to provide the requested material, please let us know in advance.

Contact : Héloïse Bourgeois
+33 (0)6 89 59 79 70
heloisebourgeois@gmail.com

ATTACHMENT

Examples of anchors points

Big tent stakes,



*Counterweights,
Water containers,*



**Photos decor and
scenography**



Contact : Héloïse Bourgeois
+33 (0)6 89 59 79 70
heloisebourgeois@gmail.com

Music of the show “Entre Nous...”

Company ENTRE NOUS

- 1_ Geometria del universo, Collen, 5:51
- 2_ Che m’importa del mondo, Rita Pavone, 2:25
- 3_ Escenas de la vida en el borde, Chango Spasiuk, 5:34
- 4_ Miss you, Meute 3:30
- 5_ My baby just cares for me, Nina Simone, 3:38
- 6_ Song sang by par Entre Nous, « Johnny tu n’es pas un ange », original music Les Paul, Parole Francis Lemarque, 3 min
- 7_ The Mysterians, Messer chups, original (2m14) Montage de 3:25
- 8_ My baby just cares for me, Nina Simone, 3:38

Support and residency:

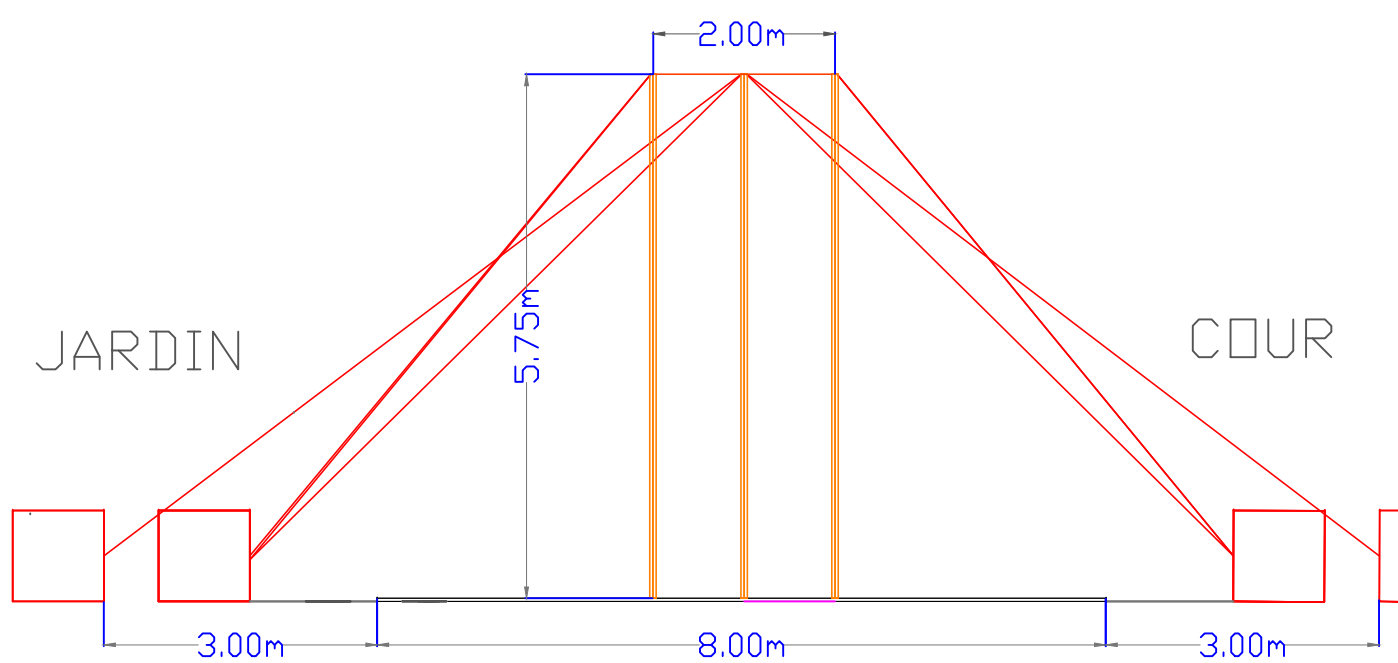
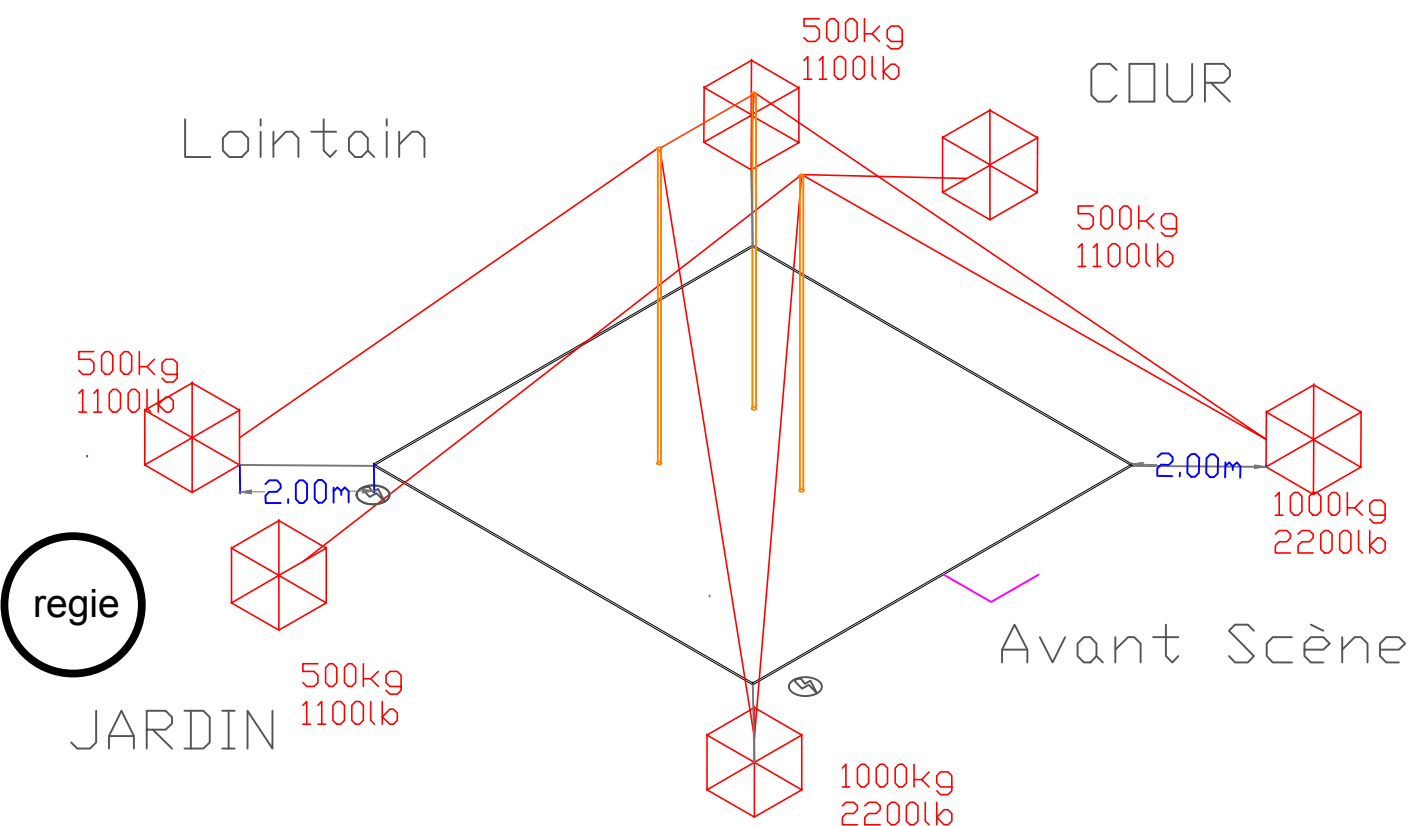
Coproduction and support:

Festival Complètement cirque of Montreal
Cirque Entre Nous
7 Tours Productions
Circus Concepts

Residencies:

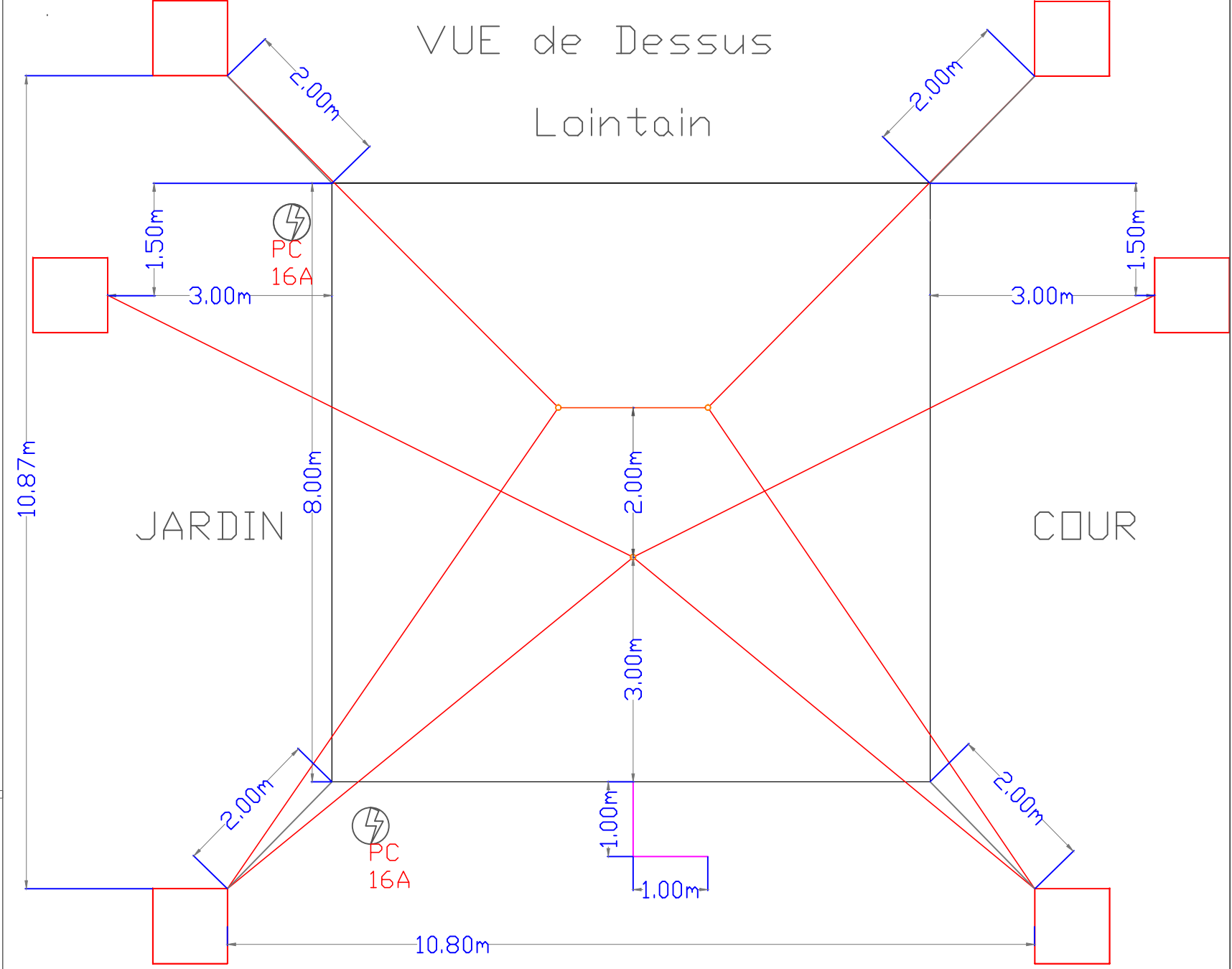
La Cigalière, Sérignan
Embelli Bain Douche, Rochessadoule
Le Cheptel Aleikoum, Saint Agile

VUE 3D



VUE De Face

VUE de Dessus Lointain



Besoin de 6 points d'ancrage au sol
 4 supportant 500kg (lointain et mitar)
 et les 2 plus à la face avec un
 ancrage supportant 1000kg

Longueur des Haubans: 8m

Collectif ENTRE NOUS Contact : Héloïse BOURGEOIS +33 (0)6 89 59 79 70 heloisebourgeois@gmail.com					
SPECTACLE : Entre Nous...			DESIGNATION : Acrange & côtes Mâts		
Date Plan : 18/11/2020	Date Jeu :	Déssiné par :	Vue : Ensemble	Format : A3	Echelle :