



CIRQUE ENTRE NOUS

LE GRENIER

TECHNICAL RIDER

Show with 5 artists
Length of the show: 1h15

This technical sheet is an integral part of the contract, it must be initialed and signed in the same way as the rest of this contract. If you are meeting any difficulty regarding technical and / or accommodation needs, we are here to help you find the best solutions.

Technical Director : Antoine Hansberger
+33 (0)6 63 78 56 93 a.hansberger@leclan.net

TABLE OF CONTENTS

Contact	3
Production	3
Touring team	3
Welcome	4
Backstage	4
Costumes	4
Catering and Accomodations	4
Other	5
Welcoming team	7
Planning	7
Decor and Scenography	10
Stage	10
Machinery	10
Hanging Frame and Anchoring Chinese Poles	11
Hanging / Hoisting the Frame	11
Anchorage points for Chinese Poles	11
Lights	12
Soound	13
Annex	15
Annex plan	17

CONTACT

PRODUCTION

ADMINISTRATION / BOOKING

Blue Line Productions
Rue Droite – 46600 Martel
Tel: 05 65 27 15 15

LOGISTICS / COORDINATION

Marie-Pierre de La Dorie
Tel: 07 50 25 98 35
mariepierredeladorie@yahoo.fr

TOURING TEAM

TECHNICAL TEAM

Technical director, stage manager and light manager
Antoine Hansberger
Tel: 06 63 78 56 93 // a.hansberger@leclan.net

Sound manager
Olivier Wurth
Tel :06 61 99 68 19 // wurtholivier@gmail.com

ARTISTIC TEAM

Héloïse Bourgeois
Tel: 06 89 59 79 70
heloisebourgeois@gmail.com

Technical Director : Antoine Hansberger
+33 (0)6 63 78 56 93 a.hansberger@leclan.net

WELCOME

You will be welcoming a team of 7:

5 circus artists, 1 technical director / light technician and 1 sound technician

BACKSTAGE

We will be expecting at least 2 dressing rooms reserved exclusively for our team. These dressing rooms should be well lit, heated and / or ventilated and equipped with mirrors, sinks, wardrobes, tables, chairs, electric outlets, showers and toilets.

The keys of the dressing rooms will be given to the light technician upon his arrival.

The access to the backstage will be forbidden to anyone external to the company during the whole day. A member of the security team will see to this and more particularly when the artists enter and exit the stage. The stage will be directly accessible through the dressing rooms, without having to transit via the public area.

COSTUMES

We need a dresser on a service to prepare, wash, dry, iron and repair (if necessary) the costumes for each performance. Otherwise, the organizer will provide the company with the necessary equipment: washing machine, dryer, ironing board and iron, clothes rack with hangers.

In all cases, thank you for leaving available in the dressing rooms an ironing board and an iron.

CATERING AND ACCOMMODATIONS

CATERING

A catering will be in place on the day of the arrival of the team for the set up and on the day of the show:

- warm and cold beverages
- tea, coffee, honey and lemons
- flat water, juices and sodas
- cheese, yogurts
- cold meat plate
- fresh and dry fruits
- bread, butter
- chocolate bars
- 5 big towels
- 1 paper tissue box in each dressing room

For the stage:

5 bottles of water

5 small towels

Have ice ready for each show, near the stage, in case of injuries.

Technical Director : Antoine Hansberger
+33 (0)6 63 78 56 93 a.hansberger@leclan.net

MEALS

The organizer will provide each day two complete meals for 7 persons (1 warm or cold starter, 1 warm main course, cheese, dessert, coffee and beverages (water, wine and beers) or 7 per-diems for the meals of 2 days. When a meal is provided, it will always be eaten after the show for the artists and before the show for the technical team.

Diet: 3 person are vegetarian

HOTEL

The organizer will book 7 single rooms in a minimum 3 stars category hotel. He will make sure that the hotel is comfortable and calm enough, not undergoing construction and near the location of the show and the restaurants. Free Internet connection, television with remote and phones in each rooms are mandatory but very appreciated. The organizer will make sure with the hotel that the breakfast can be served exceptionally late or very early.

OTHER

TRANSPORT

The technical team and 1 artist travel with a van. Thanks for providing a secure parking at the hotel and at the theater. The artists usually travel by train or plane, so the theater will have to provide upon their arrival 1 or 2 car(s) with driver(s) (6 persons + their luggage). These vehicles will be available for all necessary travels during the stay and the return to the train station or the airport. If these local transfers cannot be provided by the theater, the latter must take in charge, if necessary, the costs of taxis, on presentation of the supporting documents (reimbursement in cash to the referring artist).

SAFETY

Backstage and stage access is strictly reserved for the member of Entre Nous. Sufficient and experienced security personnel, easily identifiable but without uniforms and without dogs, will be present at the scene of the performance before the arrival of the public. The organizer will ensure that glass bottles, or all kinds of projectiles or dangerous objects are not brought into the performance area. The organizer will also prepare a first aid telephone list.

INSURANCES

The organizer is required to take out a civil liability insurance policy. He is responsible for any incident that may occur to the artists or the technicians in the course of their work. He is also responsible for the theft, breakage or deterioration of the equipment and personal effects of the Entre Nous company within the premises of the performance, or during transport between the airport / station, the hotel, the venue and the restaurants.

AUDIO AND VISUAL RECORDINGS

The company may under no circumstances be filmed, photographed or recorded, under any form whatsoever without the prior written consent of the artistic director. In all cases, the following is strictly prohibited: flash photographs, access by photographers on stage, audio and video recordings. The organizer will prepare in two copies, for the attention of the company the press kit announcing the show, and the any press material of the show will then be returned. The coming of the company cannot be associated in any way with any publicity or political movement.

WELCOMING TEAM

Our technical reception staff needs are:

- 1 General Manager
- 1 Stage Manager + 1 Machinist
- 1 Light Manager + 1 Electrician
- 1 Sound Manager

During the show, the presence of a stage manager is necessary for handling machinery behind the scenes.

Details on the presence of staff are specified in the planning part.

If the room is not able to provide all the staff required, an additional day of assembly (D-2) should be necessary.

When the team arrives, the fire plan should be pre-implemented, patched and gelatinized.

The sound patch is wired, and in working order. The sound system is calibrated.

The anchorage and lifting points for the Chinese poles and the frame must be properly installed and ready for use.

PLANNING

D-1 SET UP / ADJUSTMENTS (2 SERVICES)

First Service: 4 hours

14h-18h: Arrival of the technical team / Unloading

- Set up Machinery and Frame
- Floor marking

Required staff: 6 persons

- 1 general manager
- 1 light manager + 1 electrician
- 1 sound manager
- 1 stage manager + 1 machinist

Inter-service Sound

18h-19h

Required staff: 1 sound manager

Second Service: 4 hours

19h-23h: Light setting

- Floor mat installations
- Chinese Poles anchorage points

Required staff: 4 persons

- 1 light manager + 1 electrician
- 1 stage manager + 1 machinist

Technical Director : Antoine Hansberger

+33 (0)6 63 78 56 93 a.hansberger@leclan.net

D-DAY PERFORMANCE DAY (3 SERVICES)

First service: 3 hours

10h-12h: End Light adjustment
Clean Stage

12h 13h: Balance Sound

Staff requested: 3 persons

- 1 light manager
- 1 sound manager
- 1 stage manager

Second service: 4 hours

14h-16h: Technical connection and wiring
Warming up artists

***** Cleaning and setting up the stage: It is important that the wings of the backstage are cleaned and empty to guarantee the acrobats maximum safety and comfort.**

Staff required: 3 persons

- 1 light manager
- 1 sound manager
- 1 stage manager

18h 19h: pause

Third service: 4 hours

20h-24h: Show
Dismantling
Loading van

Staff required: 4 persons

- 1 light manager
- 1 sound manager
- 1 stage manager + 1 machinist

We bring a power drill with a 13 mm bit; a second one is welcome if possible!

It is important that we have all the personnel required until the truck is loaded.

A minimum of 4 people will be dedicated to dismantling the frame.

Technical Director : Antoine Hansberger
+33 (0)6 63 78 56 93 a.hansberger@leclan.net

SET AND SCENOGRAPHY

A wooden frame is suspended above 3 Chinese poles.

It has a dimension of 8 meters wide, 6.25 meters deep.

The floor should be smooth, flat and without any bumps, preferably black. It is covered with a carpet of 8 meters by 8 meters provided by the Company.

The company brings various accessories (a stepladder, an armchair, suitcases...).

STAGE

The minimum stage dimensions should be 10 meters wide by 11 meters deep.

The height under the grid has to be at least 7.5 meters.

The stage frame should not be below 6 meters.

The box will be Italian-style composed of 5 pairs of legs and 4 borders.

The upstage will be masked with a black backdrop on a curtain track. (Opening of the backdrop for the last act).

A 12 meters by 8 meters high cyclorama will be installed behind this backdrop.

The organizer must therefore provide for the masking of the stage:

10 legs

5 borders

1 black backdrop on rail

1 white or gray cyclorama adapted to the dimensions of the backdrop

MACHINERY

A piece of machinery is installed on the grid. The company brings the machinery system.

The company provides:

1 hanging lamp with two pulleys.

They are installed before lifting the frame.

The operating system is on stage left.

We need the stage manager of the theater equipped with an intercom during the show to handle it as well as to open the backdrop 15 min before the end for the last act.

HANGING FRAME AND ANCHORING CHINESE POLES

The technical director of the company will contact the organizer's technical director to validate the rigging points for the frame and the anchor points for the poles.

HANGING / HOISTING THE FRAME

For the frame, we need 12 (minimum 8) points of rigging on the grid (trussing with motors, motorized or counterweight fly-system) see Annexes structural plan.

If the grid is fixed, the organizer must provide at least 8 motors or chain hoists to lift the frame.

The company provides:

- 12 cable grippers
- 12 slings diameter 6mm length 4m
- 12 quick links (M10)
- 12 straps 1000kg

ANCHORS OF THE CHINESE POLES

The poles are guyed-wired by steel cables. We need 4 ground anchor points each supporting 500kg (attached to the wall, chemical or mechanical sealing, ballast counterweight, water containers, big top clamps and 2 others anchor points supporting 1000kg (2 cables are attached the 2 anchor points on the stage right and stage left of the proscenium.

See annex for typical photos of anchorage points

The technical director will study the location of the various points.

See annex for the Standard Plan of the Chinese Poles

The company will provide:

- 3 Chinese Poles including heads and feets (height 5.75m)
- 8 cables (length 6m and 8m)
- 8 straps (length 2m)
- 1 sling to connect the double pole
- 8 ratchet straps to put tension on the poles
- quick links
- carabiners.

LIGHTS

Plans of the venue and the grid at 1 / 50th, and the equipment list will be provided by the organizer, in order to best adapt the light plot to the venue. He will contact you 2 to 3 weeks before the date to better prepare the pre-hang of the projectors. Adaptations are possible.

A work platform, genie-lift, will be provided by the organizer for the light focus and adjustment of the grid because of the implantation of the frame underneath the lighting projectors.

It is understood that technicians employed by BlueLine do not work at height. A technician from the venue must carry out the adjustments requiring work at height, or one of his service providers, duly trained and authorized for this task.

Required material:

84 DIMMERS 3kW

Traditional projectors:

4 Profile fixture 2000w type RJ 714sx

1 Profile fixture 2000w type RJ 713sx

18 Profile fixture 1000w type RJ 614sx

4 Profile fixture 1000w type RJ 613sx

1 PC 2000w type RJ29 HPC

25 PC 1000w type RJ310 HPC

12 PAR 64 CP61

8 PAR 64 CP62

16 asymmetric Cycliods type ADB

We will need a graduated line on a center pole for a hanging lampshade with a pulley system for a manipulation during the show.

7 Ladders or poles for sidelights 2.5 meters high: (see appendices fire plan)

10 floor plates

Control Booth:

The light controls must be next to the sound controls. The light operator brings his light board (ChamSys MagicQ).

Technical Director : Antoine Hansberger

+33 (0)6 63 78 56 93 a.hansberger@leclan.net

SOUND

PUBLIC ADDRESS SYSTEM

The P.A. system must be adapted to the room for optimum sound
L-R + subwoofer (separated) type L-Acoustics, D&B, ...

FOH CONTROL BOOTH

Digital mixer type Yamaha CL, QL, M32 series...
no analog board is possible, thank you.

!! the SUBS must be separated from the console !!

We provide the audio supports in .wav files and / or on 1 CD: please provide accordingly
1 stereo CD player located in control room.

MONITORS

The stage monitors are controlled from the FOH board.

Please provide 4 side fills on stand type L-Acoustics MTD 112 on 2 amplification channels;

On 4 separate channels (cf. SOUND stage plot)

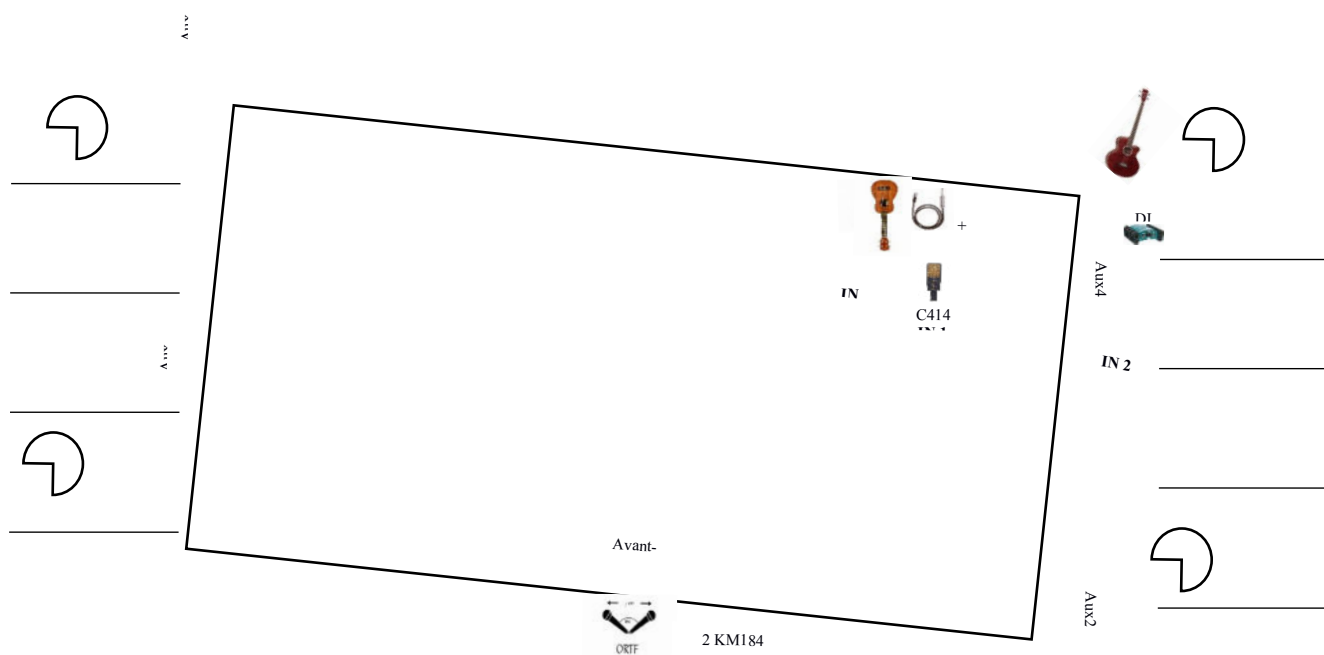
HF / MICROPHONES

- 1 HF type QLXD4 connections with 1 QLXD1 body pack + 1 JACK adapter (6.35mm) for HF body pack
- 1 C414 XLS (microphone stand with round base)
- 1 DI type BSS AR 133
- 2 KM184 in ORTF couple
- 1 HF handheld behind the scenes (start speech / possible board edge)

PATCH

CH	INSTR	MIC	48V ²	traitement	place	COMMENTS
1	VOX/AMB	C414/AT4040	X	comp	Upstage left	Microphone large membrane preferred
2	BASS	DI	X	comp	Upstage left	
3	UKU			comp		Pocket HF + adapt jack
4	AMB Left	KM 184	X	comp	Middle downstage	barre de couple ORTF very downstage (edge of carpet)
5	AMB Right	KM 184	X	comp	Middle downstage	
6	PC left					
7	PC right					
8	CD left					
9	CD right					
10	REVB ROOM L					
11	REVB ROOM R					
12	DELAY L					
13	DELAY R					

PLAN



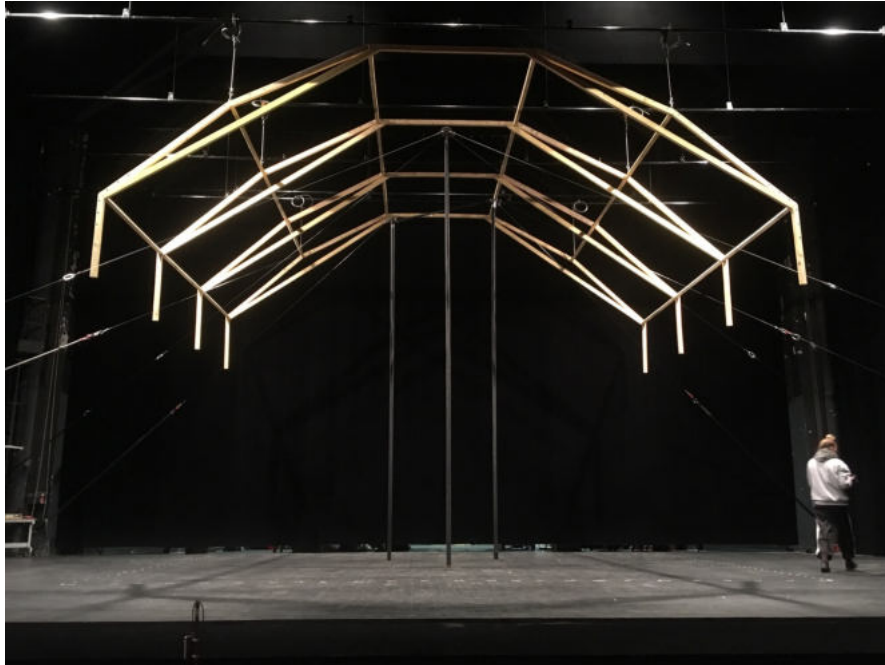
Technical Director : Antoine Hansberger
 +33 (0)6 63 78 56 93 a.hansberger@leclan.net

IN 4 et

ANNEX

PHOTOS SET & SCENOGRAPHY

Frame and Chinese Poles overview



Technical Director : Antoine Hansberger
+33 (0)6 63 78 56 93 a.hansberger@leclan.net

EXAMPLES OF ANCHOR POINTS

Ballast with counterweight



Ballast in ciment

Water containers

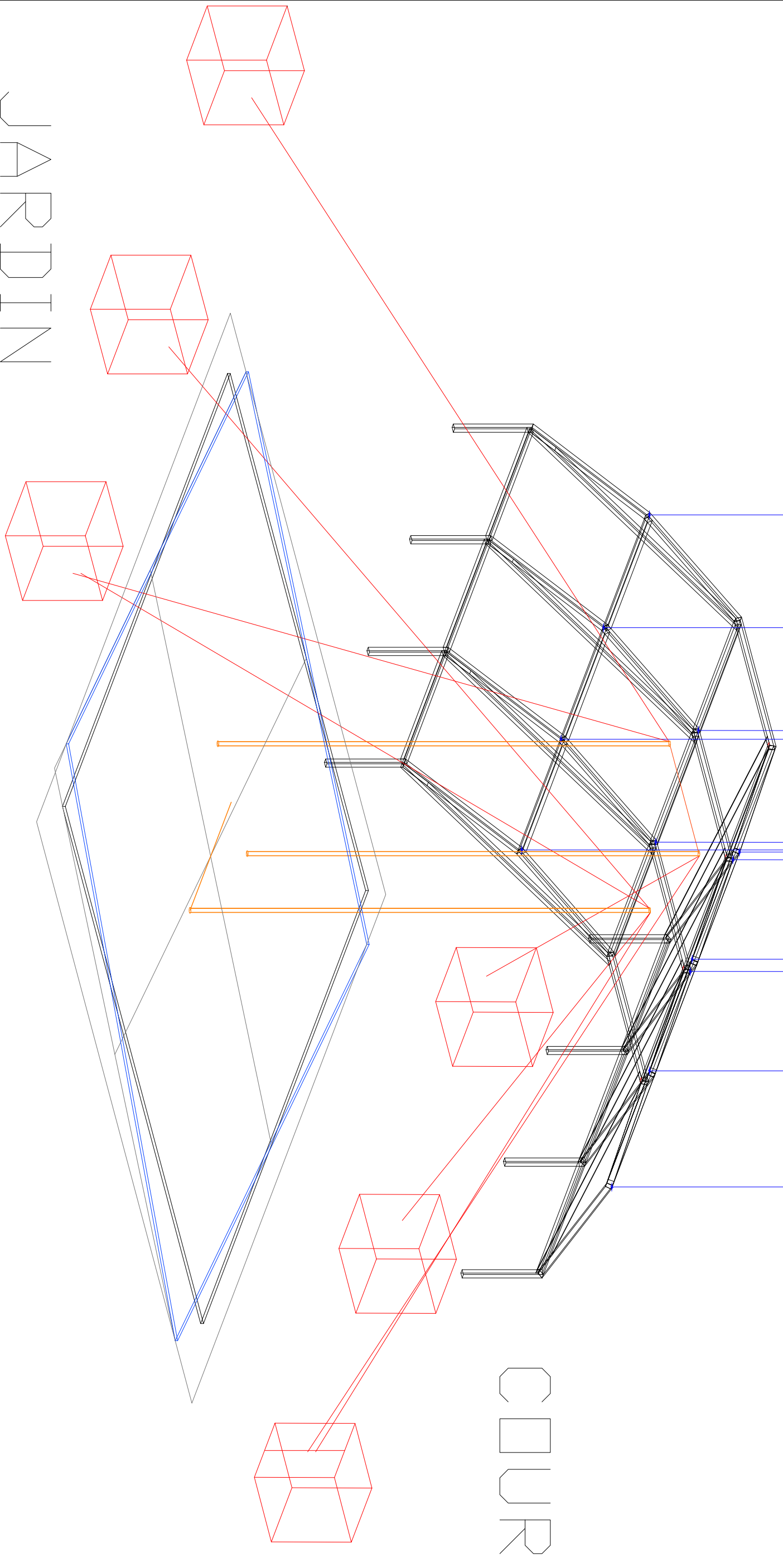


ANNEX PLANS

CHINESE POLES PLAN

FRAME PLAN

FIRE PLAN



JARDIN

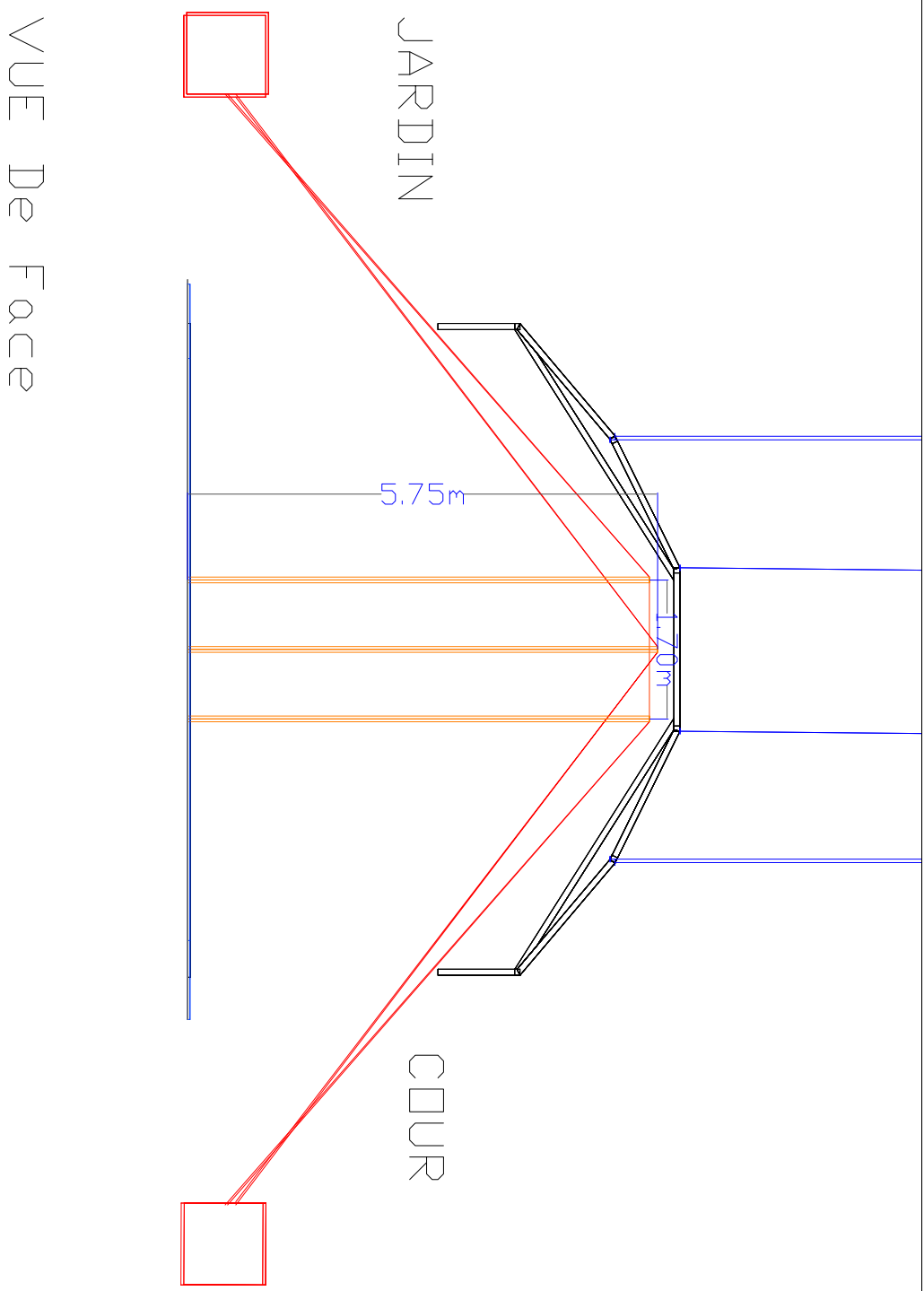
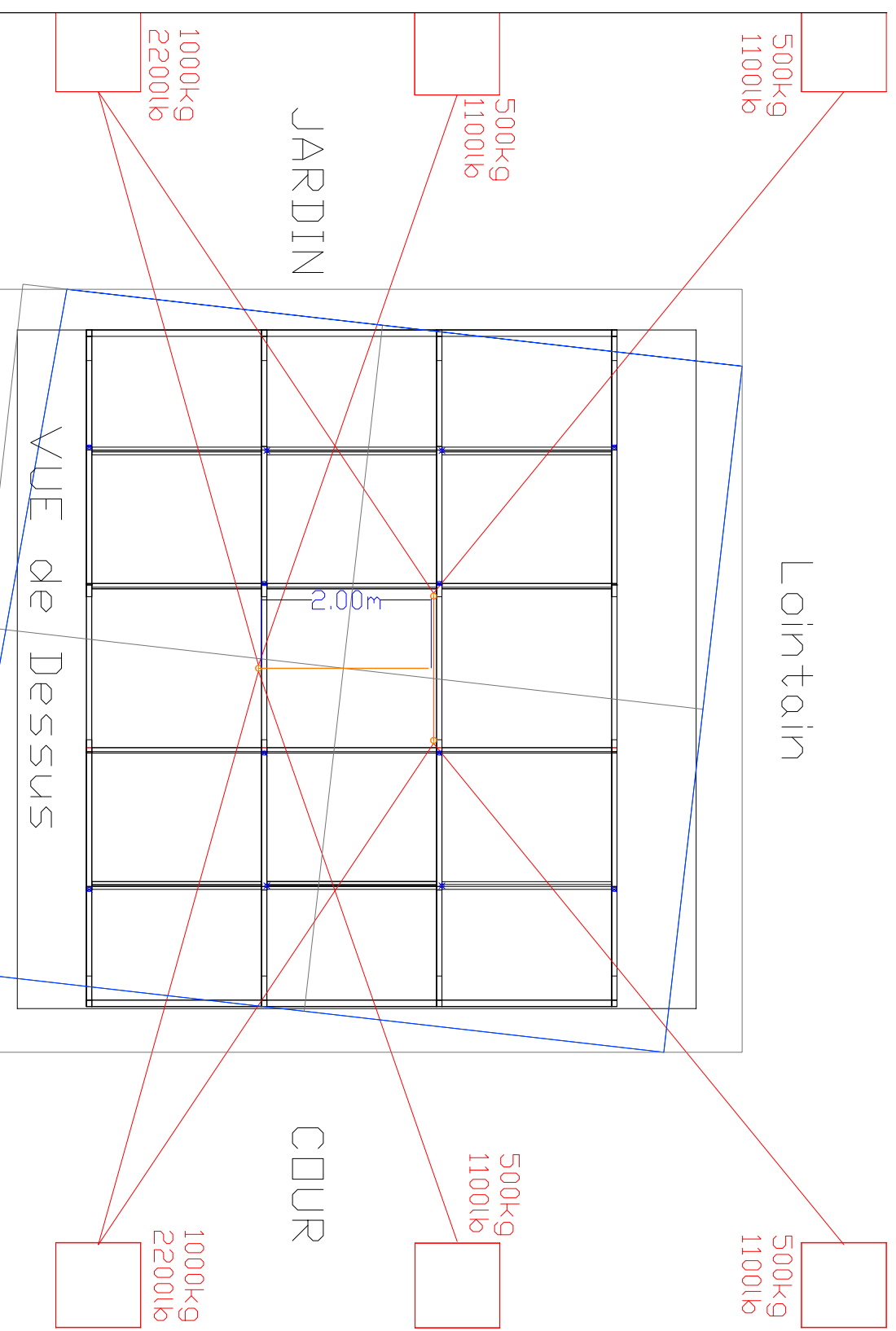
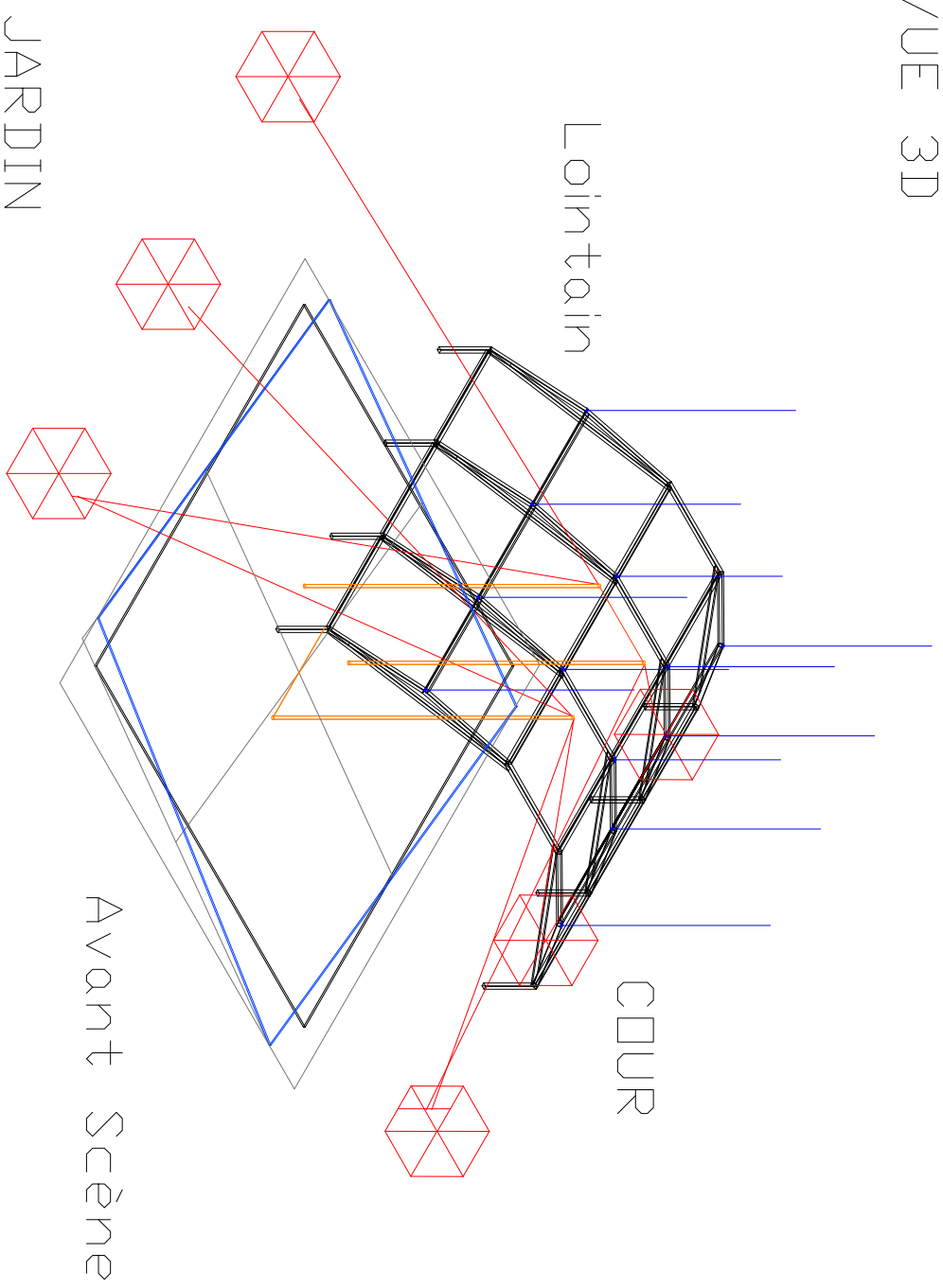
COUR

Collectif ENTRE NOUS
Régie Générale : Antoine Hansberger
+33 (0)6 63 78 56 93 a.hansberger@leclan.net

SPECTACLE : LE GRENIER **DESIGNATION :** Vue d'ensemble 3D

Date Plan :	Date Jeu :	Dessiné par :	Vue :	Format :	Echelle :
21/11/2019			Ensemble	A3	1/50eme

VUE 3D

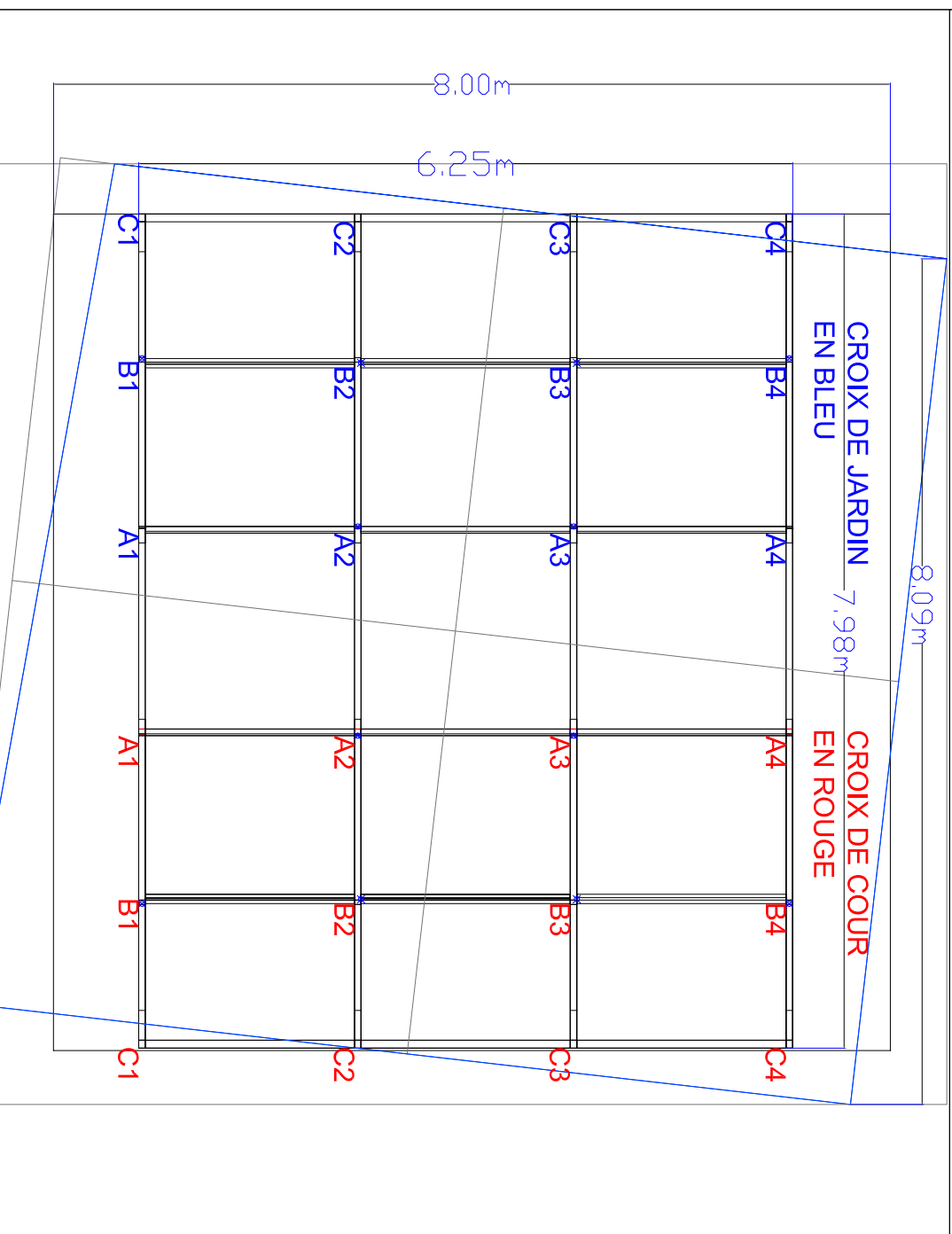
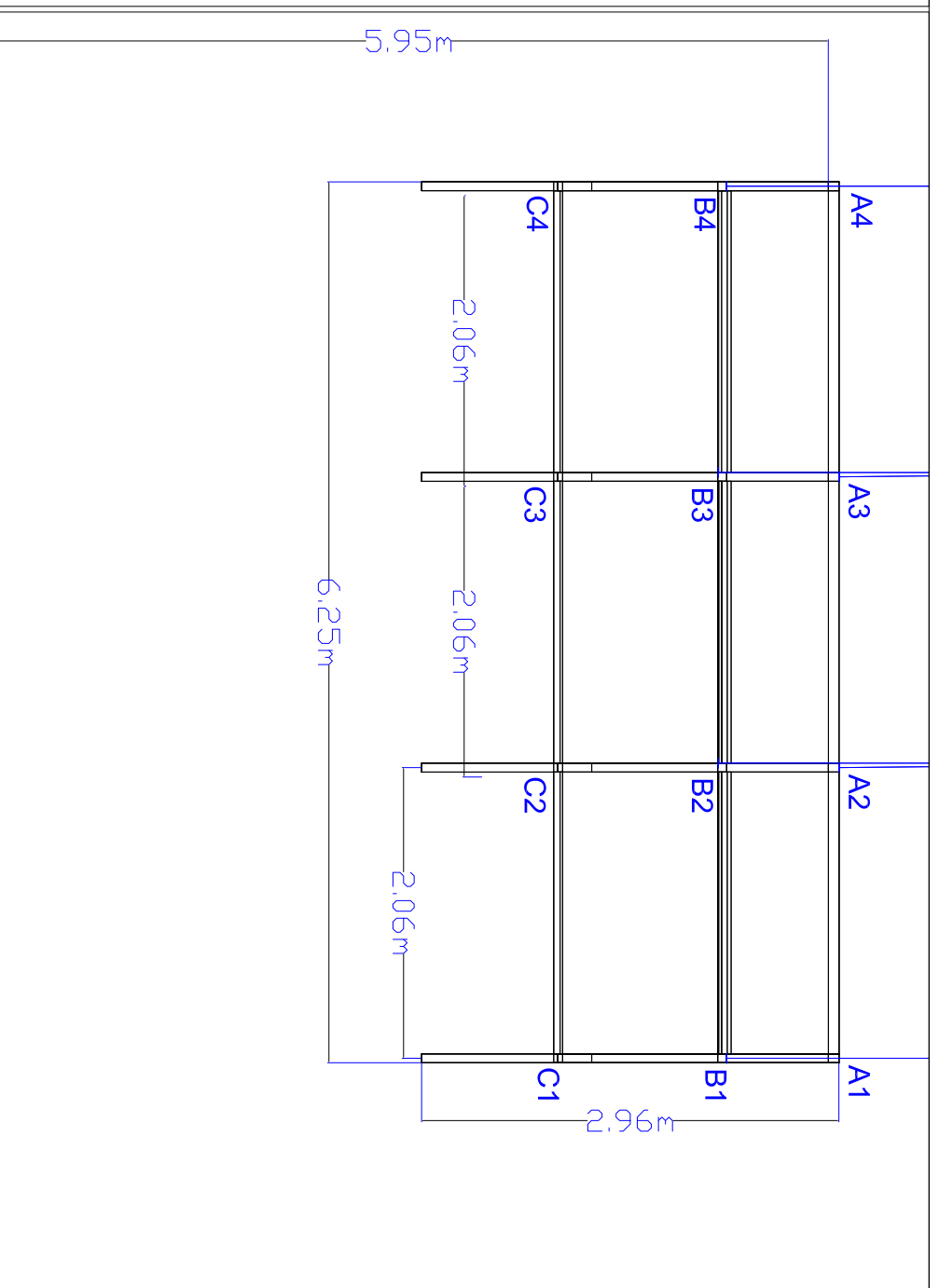
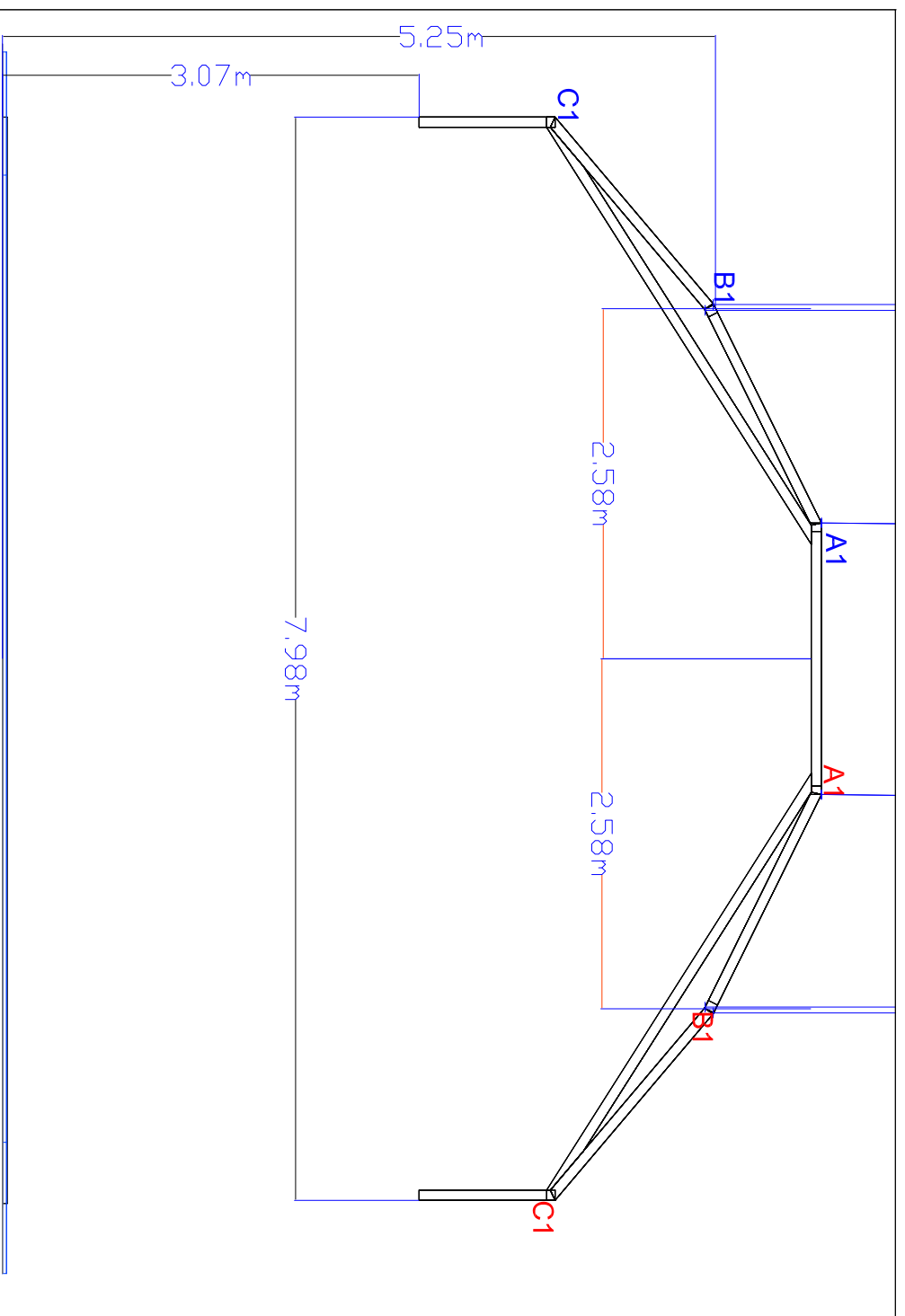


Besoin de 6 points d'ancrage au sol
4 supportant 500kg (loin tain et mitar)
et les 2 plus à la face avec un
ancrage supportant 1000kg

Longueur des Haubans: 6m et/ou 8m

Collectif ENTRE NOUS		DESIGNATION :	
Régie Générale : Antoine Hansberger +33 (0)6 63 78 56 93 a.hansberger@leclan.net		Acrange & côtes Mâts	
SPECTACLE :		Format :	
Le Grenier		A3	
Date Plan :	Date Jeu :	Dessiné par :	Vue :
21/11/2019			Ensemble
		Echelle :	

VUE De Face

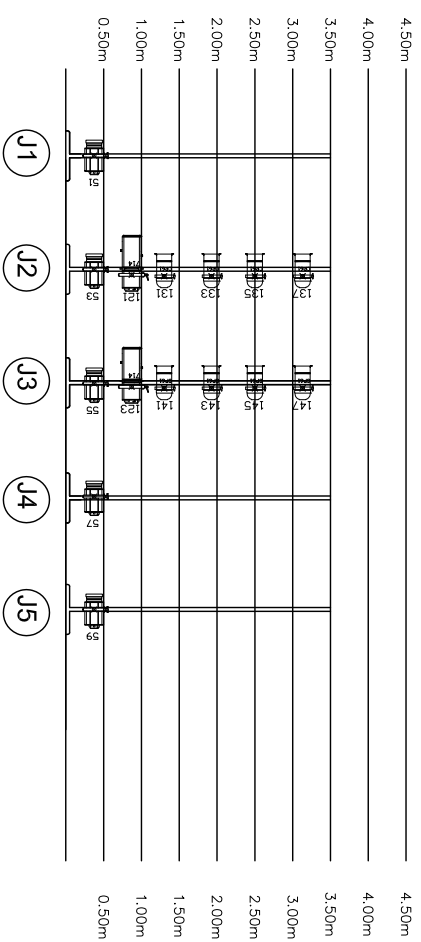


Dimensions de la Charpente :
 6.25m de profondeur
 8 m de largeur

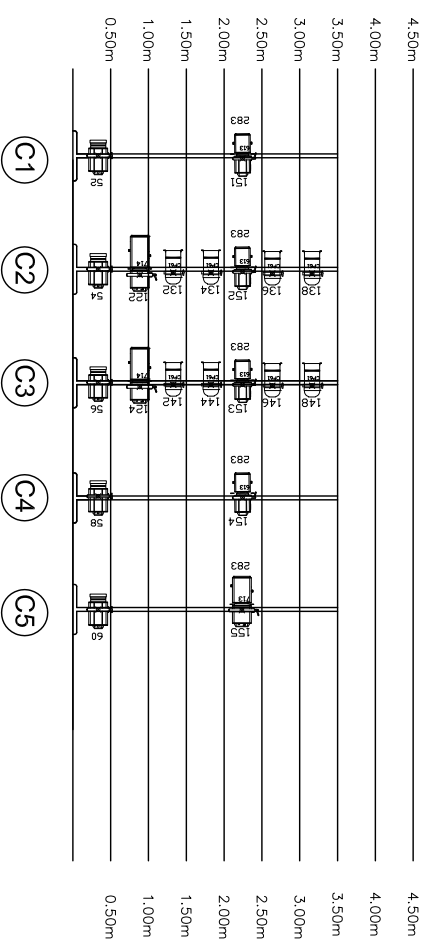
Les Lignes et Points Bleus sont les accroches de la Charpente.
 Soit 12 points au Total.

Collectif ENTRE NOUS		Régie Générale : Antoine Hansberger		+33 (0)6 63 78 56 93 a.hansberger@leclan.net	
SPECTACLE :		DESIGNATION :			
LE GRENIER		Charpente			
Date Plan :	Date Jeu :	Dessiné par :	Vue :	Format :	Echelle :
21/11/2019			Ensemble	A3	1/50eme

PORTANTS Latéraux Côté JARDIN

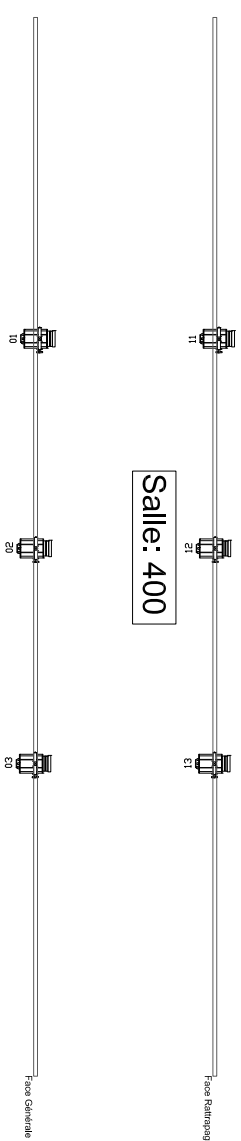
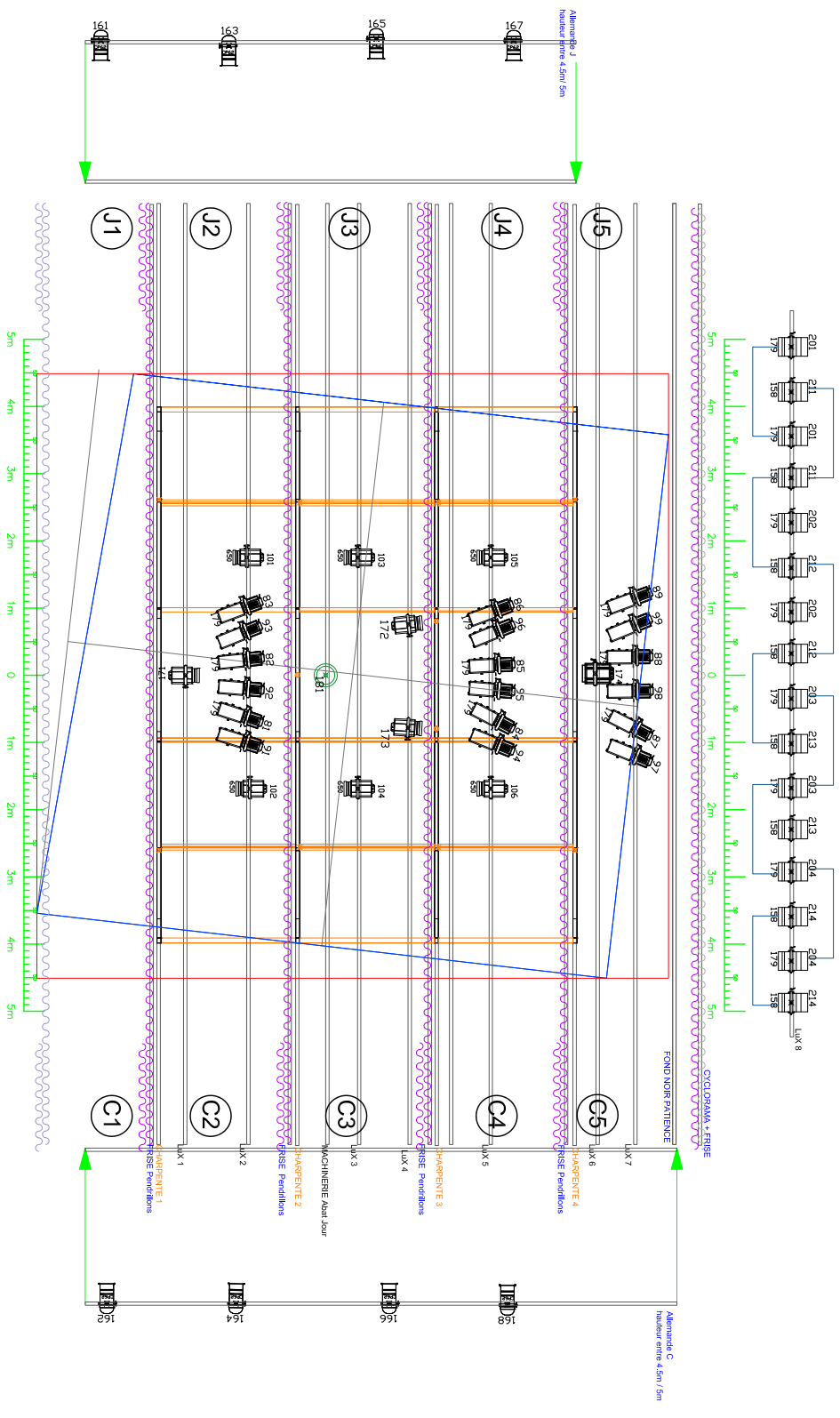


PORTANTS Latéraux Côté COUR



Collectif Entre Nous LE GRENIER - Légende

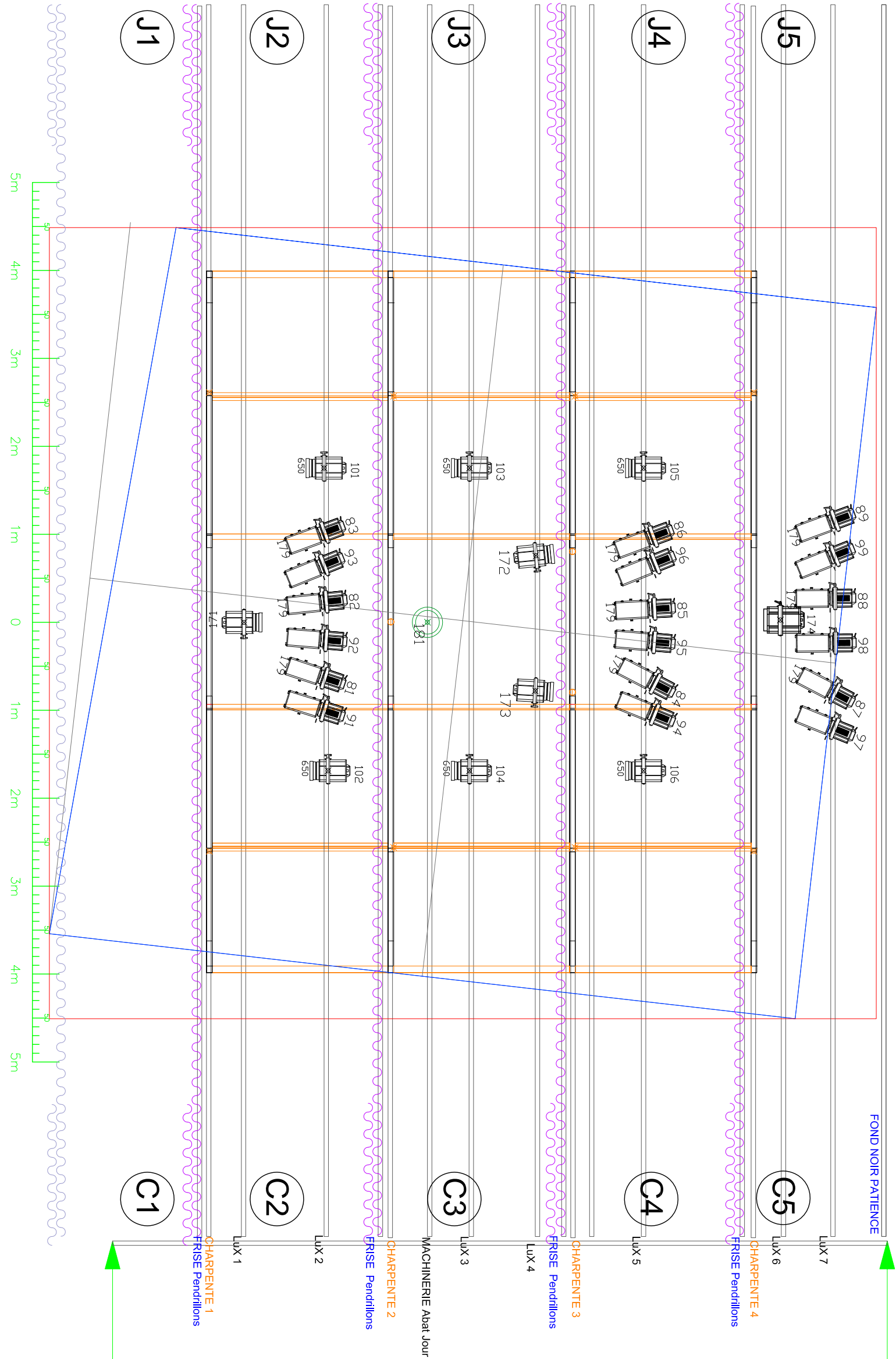
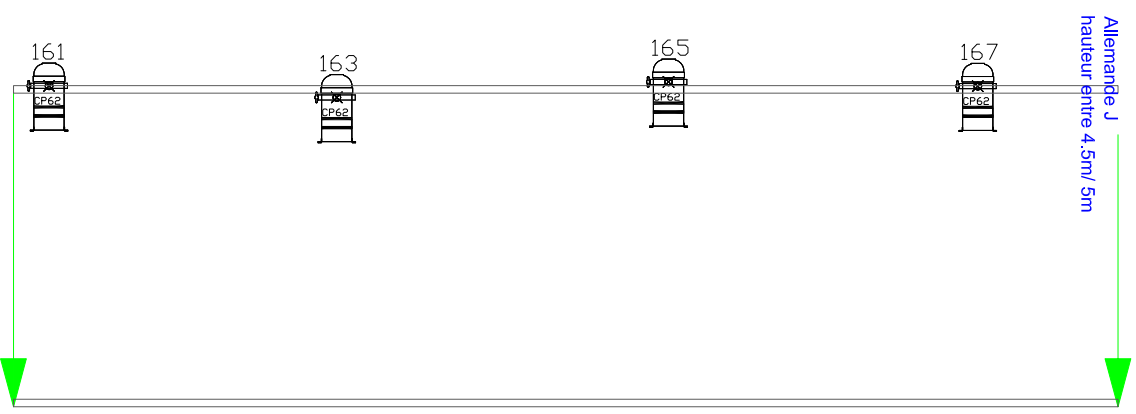
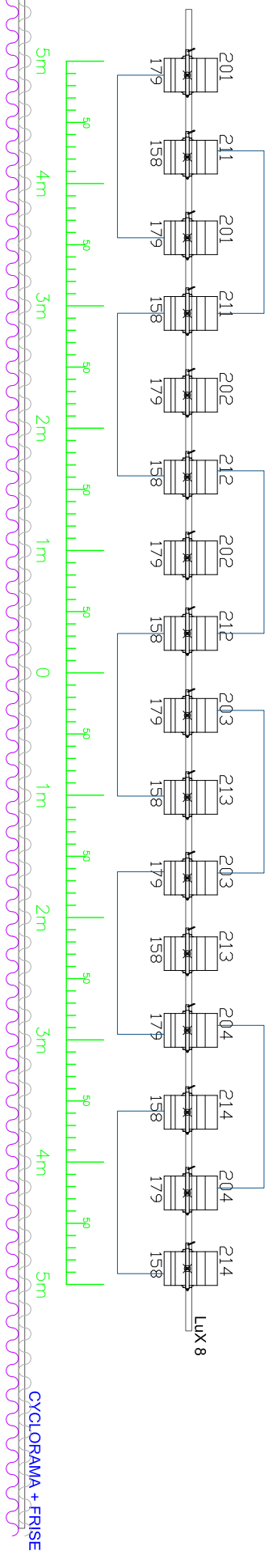
- (25) PC 1K Robert Juliat 310 HPC
- (1) PC 2K Robert Juliat 329 HPC
- (4) DECOUPE 2K Robert Juliat 714 SX
- (18) DECOUPE 1K Robert Juliat 614 SX
- (1) DECOUPE 2K Robert Juliat 713 SX
- (4) DECOUPE 1K Robert Juliat 613 SX
- (8) PAR 64 CP62 MFL
- (16) PAR 64 CP61 NSP
- (16) CYCLIODE ADB ACP1001
- (1) ABAT-JOUR (CIE)
lampe pilote 230V 250W E27 Dépolie
- (7) TOUR LATÉRAUX
hauteur mini 2m50 (idéal 3m)
- (10) platines



Collectif ENTRE NOUS

Régie Générale : Antoine Hansberger
+33 (0)6 63 78 56 93 a.hansberger@leclan.net

SPECTACLE :		LE GRENIER		DESIGNATION :		Plan de FEUX	
Date Plan :	Date Jeu :	Dessiné par :	Vue :	Format :	Echelle :		
21.11.2019	A H	ENSEMBLE	A3	1/100eme			



Allermande C hauteur entre 4

